



## BCR Ranch Life News

By Jeanine Corn Best

### THE WAY OF THE RANCHER



By Jeanine Corn Best this is my opinion "I have no filter" I will take the blame, praise for what I say or do. This is my way.

This has been the brain storm of Jeanine Corn Best Grand daughter of Wade Corn, part of the history is found [www.bestcornranch.com](http://www.bestcornranch.com). This is being published for the survival and understanding, to help today's world see the ways of the ranchers and agriculture through one family past, and the

survival of the future and how we will adapt to our surroundings like animals we care for.

Having to adapt in the world of agriculture is not an easy task. There is a fine line between old world and new world. The old is slow and steady. Generations have done it this way. Getting it done, done right so we do not have to go back and waste time again to finish the job.

New is how fast it is out there in the real world, past the boundaries, fences, and gates that stay locked to the outside world. Our front door is our gates, they stay locked like your front door. We know when you come, we know when you go. You are invited to come visit, but please call, do not just show up.

That is from the old world "manners" that is something we feel that the new world is missing.

Don't take advantage of us. We don't take advantage of you.

For BCR Guest Ranch packages visit [www.bestcornranch.com](http://www.bestcornranch.com) or call Jeanine Corn Best (575)420-8455.

### Drawing

Get a 3 day  
(2 night)  
Working Ranch

Vacation!

Enter for your  
chance to win at  
[bestcornranch.com](http://bestcornranch.com)  
\$10.00 per entry

# SHEARING...2009

*The Webster definition of shearing: 1 To remove (The fleece or hair) from by cutting with a sharp instrument: clip 2. To strip of by or as if by clipping. 3. To cut with shears.*



This is something we do once a year. Usually it will take place in the early spring or late fall. All sheep are rounded up, put in pens. We do much more to the sheep before and after they go through the process of shearing. Vaccinations are one of those things.

Our shearers come from Montana, Nebraska and surrounding areas. They work as a team from one to as many as seven. Each shearer

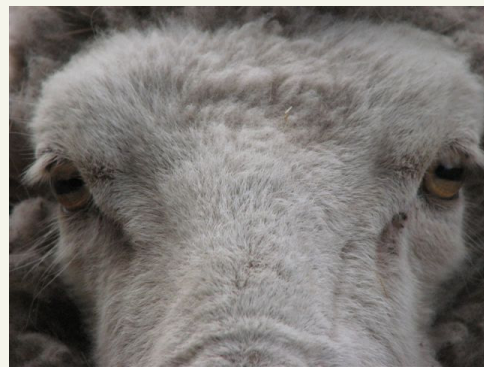
will shear from 150 to 200 a head a day. Shearers shear from 8am to 5pm with 2 break and lunch break.

We have to do this even if the price of the wool is down. The market depends on public supply and demand. Wool can not be left on the animal. You would not leave a winter coat on at 110 degrees in the summer. It also makes it hard for the lambs in the spring to nurse the ewe.

Wool is a green product it is like cotton it is renewable the animal is not hurt or its life taken. Made into clothing it is warm and lets the body breath and perspire the way the body is meant to. Wool carpet will last forever! I have had some in my house for over 40 years. I remember it as a child, it looks like new. Wool is one of the first type fibers that have been woven into blankets, material, cloth. It holds dye very well.

It is an amazing product that needs to come back in to the public's eye.

If you would like to join us for shearing look at [www.bestcornranch.com](http://www.bestcornranch.com) for our custom ranch packages.





## Miles of fence DOWN!

Three on , Windmill grass , Needle grass and the New Mexico wind seem to be a deadly combination this year. That is on the fences. Many miles approximately 70 to 80 miles of inside fence have been laid down in the last few months. Yes laid down is just what it sounds like. The grasses get so thick on the fence and the fence is so old that the posts break off at the ground and the fence is strung so tight that the weight just lays it down.

Now this grass is not something that the animals eat. This is a grass that when it first comes out of the ground they may nibble on but grows so fast that they cannot keep up with it. The left over grasses grow up to adulthood and seed out windmill grass is just as it sounds it flies through the air to spread its seed, needle grass has a barb like a fishing hook and grabs onto any and everything including animals, people, clothes and other grasses.

This has a snowball effect and this ball just gets bigger and bigger until it hits a fence or a corner post it will go over with the force of the wind or will continue to push on the fence till it falls over from the breaking of the post.

This in turn gives the livestock the opportunity to travel to other pastures and get mixed up. This is a bad thing, a chain reaction will occur. You do not want an animal to get mixed up. This is breeding season and the boys with the wrong girls can mess up the genetics. "3 generation of genetics".

So Dave and Tim, stopping there other duties, go out and prop the fence up to the best of there ability until they can get time to fix it right. They ride in the pastures counting to

make sure none of the animals have "Crossed the line".

Crossing the line could cause a years pay to disappear. Ranchers only get paid once a year We have to make it last all year. One year lost could cost us our family ranch. The stakes run high in the life of a rancher.



# BEST - CORN

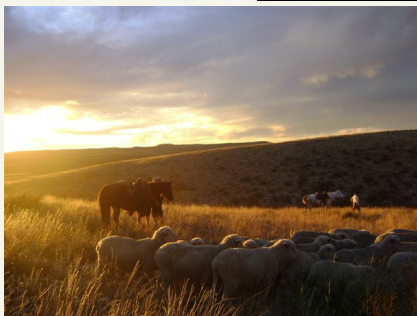


## RANCH

1300 West Fourth Street  
Roswell, New Mexico 88201  
575-420-8455  
[www.bestcornranch.com](http://www.bestcornranch.com)



The ranch is located in an area rich in history between Lincoln N.M. and Fort Sumner N.M. and it is known that many outlaws, lawmen and other historical figures traveled this area. The most well known are Billy the Kid, Pat Garrett, and John Chisum.



Published by Copy Rite Printing Roswell/Ruidoso • [www.copyritenm.com](http://www.copyritenm.com)  
Designed by Blackbird Designs • [www.bbirddesigns.com](http://www.bbirddesigns.com)

*Visit our online store for unique gifts you'll only find in the great southwest.*

Note cards, posters and prints with cowboys, horses, and our infamous southwest sunsets!



[www.bestcornranch.com](http://www.bestcornranch.com)



Cactus Pads you can eat or plant!